

# ORANGE BLOSSOM PLAZA

# FOR LEASE

SWC OF E OSCEOLA PKWY & S ORANGE BLOSSOM TRAIL, KISSIMMEE, FL 34744




LOCATION DESCRIPTION

SWC of E Osceola Pkwy & S Orange Blossom Trail

PROPERTY HIGHLIGHTS

- New development with a wide array of retail and restaurant opportunities
- Site plan is able to accommodate an ATM user
- 1.6 miles from the Florida Turnpike
- Nearby retailers include Walmart Supercenter, Lowes, Ross, JCPenney, Kohls, Burlington, Marshalls, HomeGoods, Hobby Lobby, Bed Bath & Beyond and Dick’s Sporting Goods
- Traffic Counts (AADT): E Osceola Pkwy - 51,000; S Orange Blossom Trail - 40,000; Florida Turnpike - 74,500



|  DEMOGRAPHICS | 1 MILE   | 3 MILES  | 5 MILES  |
|--|----------|----------|----------|
| Total Population   | 8,782    | 121,209  | 261,795  |
| Daytime Population   | 11,456   | 106,568  | 226,665  |
| Households   | 3,263    | 40,229   | 85,609   |
| Average HH Income  | \$90,793 | \$88,183 | \$94,112 |



**PATRICK FREASE**  
patrick.frease@tscg.com  
407.788.8818



# ORANGE BLOSSOM PLAZA

SWC OF E OSCEOLA PKWY & S ORANGE BLOSSOM TRAIL, KISSIMMEE, FL 34744

# FOR LEASE



| SUITE | TENANT NAME             | SPACE SIZE |
|-------|-------------------------|------------|
| 1     | TBD Grocer              | 42,665 SF  |
| 2     | Available               | 4,566 SF   |
| 3     | Crispy Cone             | 1,440 SF   |
| 4     | CoCo Nail               | 2,000 SF   |
| 5     | Available               | 1,212 SF   |
| 6     | Available               | 2,000 SF   |
| 7     | Pacific Dental Services | 3,203 SF   |

| SUITE | TENANT NAME     | SPACE SIZE |
|-------|-----------------|------------|
| 8     | Available       | 1,600 SF   |
| 9     | Stanton Optical | 3,204 SF   |
| 10    | Available       | 3,208 SF   |
| 11    | Grain & Berry   | 1,600 SF   |
| 12    | District Tacos  | 2,002 SF   |
| 13    | Available       | 13,614 SF  |



**PATRICK FREASE**

patrick.frease@tscg.com

407.788.8818



**SJC VENTURES**



# ORANGE BLOSSOM PLAZA

SWC OF E OSCEOLA PKWY & S ORANGE BLOSSOM TRAIL, KISSIMMEE, FL 34744

# FOR LEASE



**PATRICK FREASE**  
patrick.frease@tscg.com  
407.788.8818





# ORANGE BLOSSOM PLAZA

SWC OF E OSCEOLA PKWY & S ORANGE BLOSSOM TRAIL, KISSIMMEE, FL 34744

# FOR LEASE



**PATRICK FREASE**

patrick.frease@tscg.com

407.788.8818



**SJC VENTURES**

NO WARRANTY EXPRESSED OR IMPLIED HAS BEEN MADE AS TO THE ACCURACY OF THIS INFORMATION, NO LIABILITY ASSUMED FOR ERRORS OR OMISSIONS.



# ORANGE BLOSSOM PLAZA

# FOR LEASE

SWC OF E OSCEOLA PKWY & S ORANGE BLOSSOM TRAIL, KISSIMMEE, FL 34744



**PATRICK FREASE**

patrick.frease@tscg.com

407.788.8818



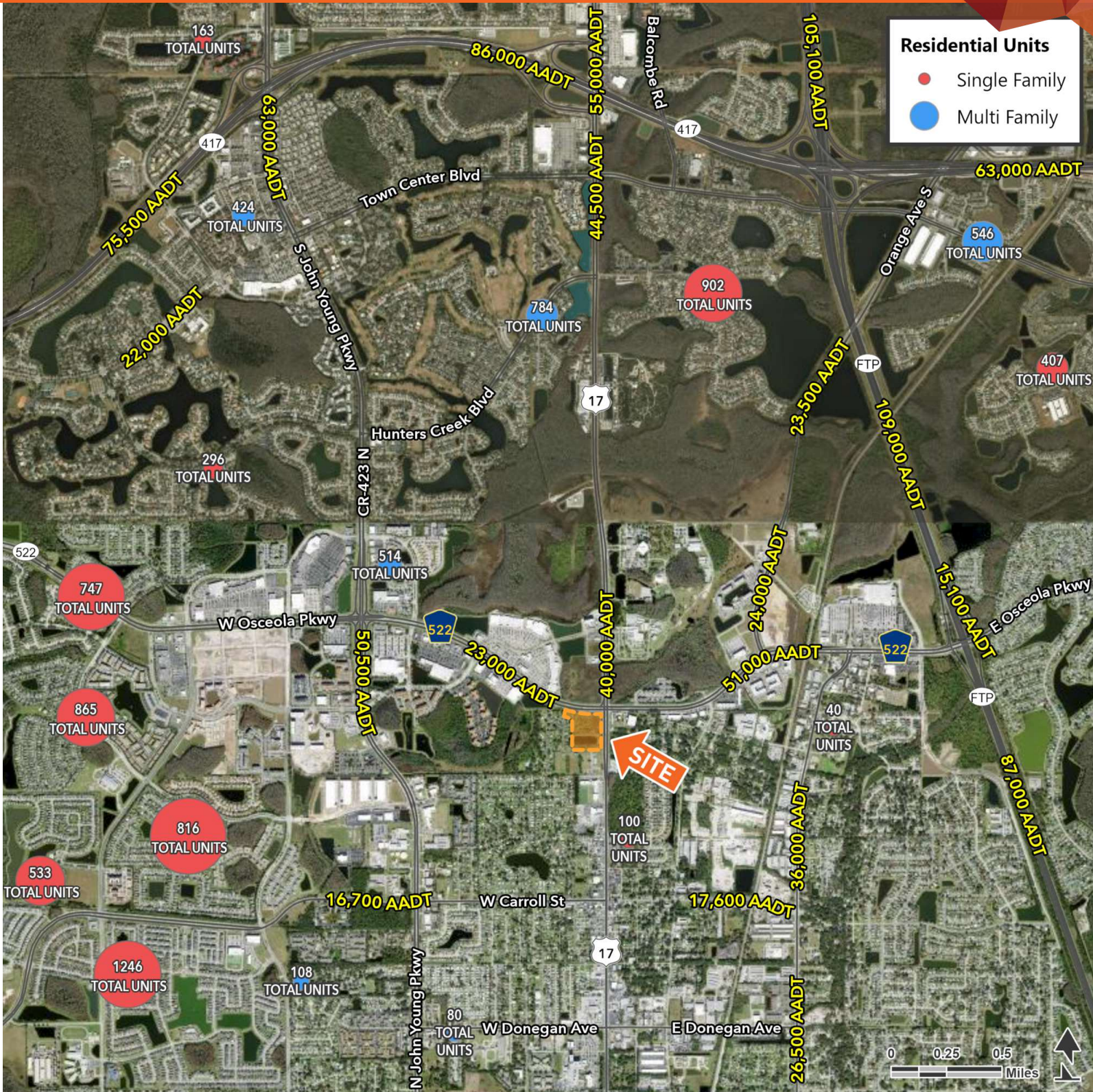
**SJC VENTURES**



# ORANGE BLOSSOM PLAZA

# FOR LEASE

SWC OF E OSCEOLA PKWY & S ORANGE BLOSSOM TRAIL, KISSIMMEE, FL 34744



**PATRICK FREASE**

patrick.frease@tscg.com

407.788.8818



**SJC VENTURES**